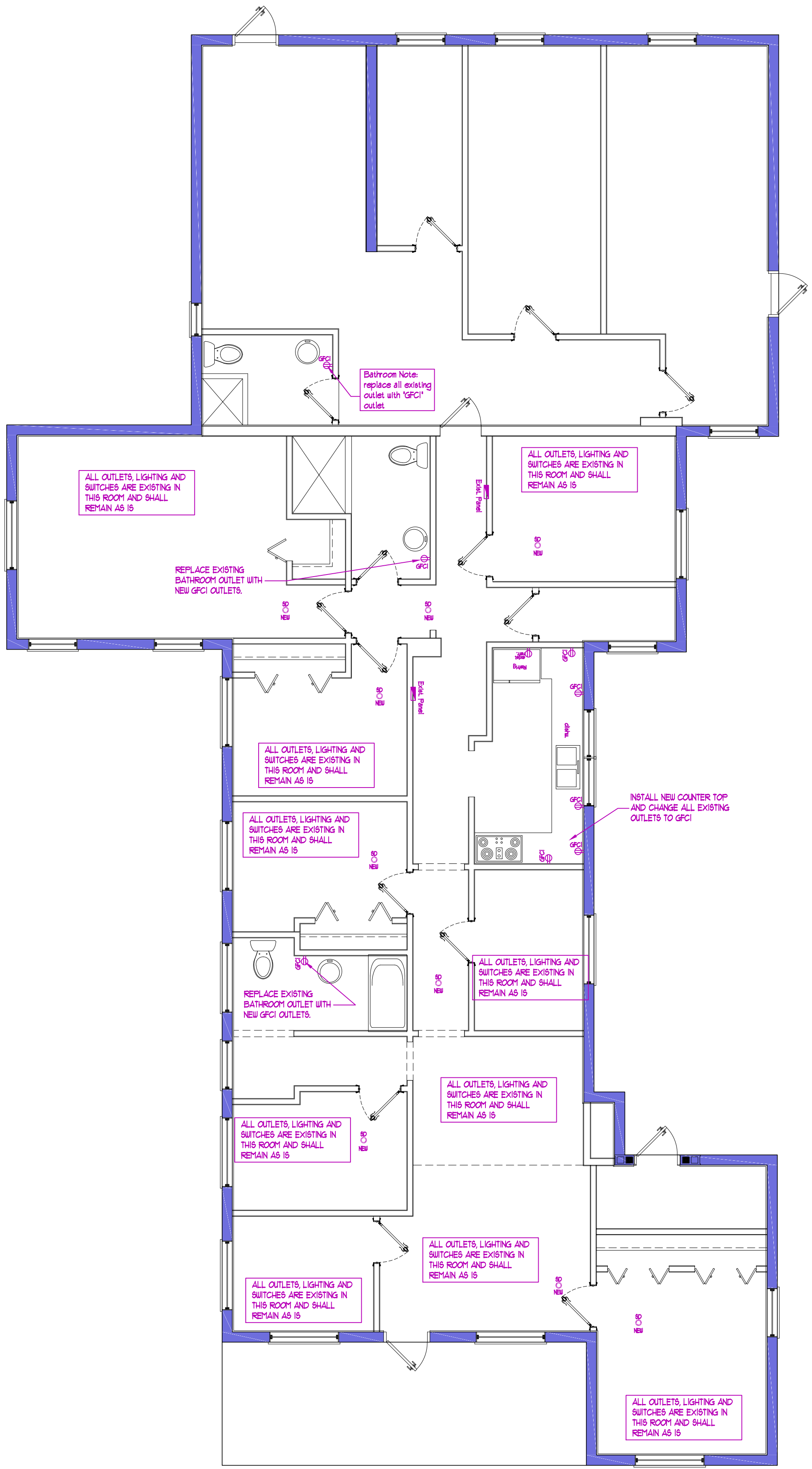


ELECTRICAL POWER PLAN

SCALE: 1/4" = 1'-0"



ELECTRICAL NOTES

SCALE: NT5

SMOKE DETECTOR NOTES:

HARD WIRED SMOKE DETECTORS ARE REQUIRED OUTSIDE OF ALL SLEEPING AREAS, INSTALLED IN THE VICINITY OF THE BEDROOMS.

MIN. 10 YEAR SEALED BATTERY TYPE SMOKE DETECTOR CAN BE USED FOR RENOVATION

This residence is not equipped with smoke detectors in accordance to code standards.

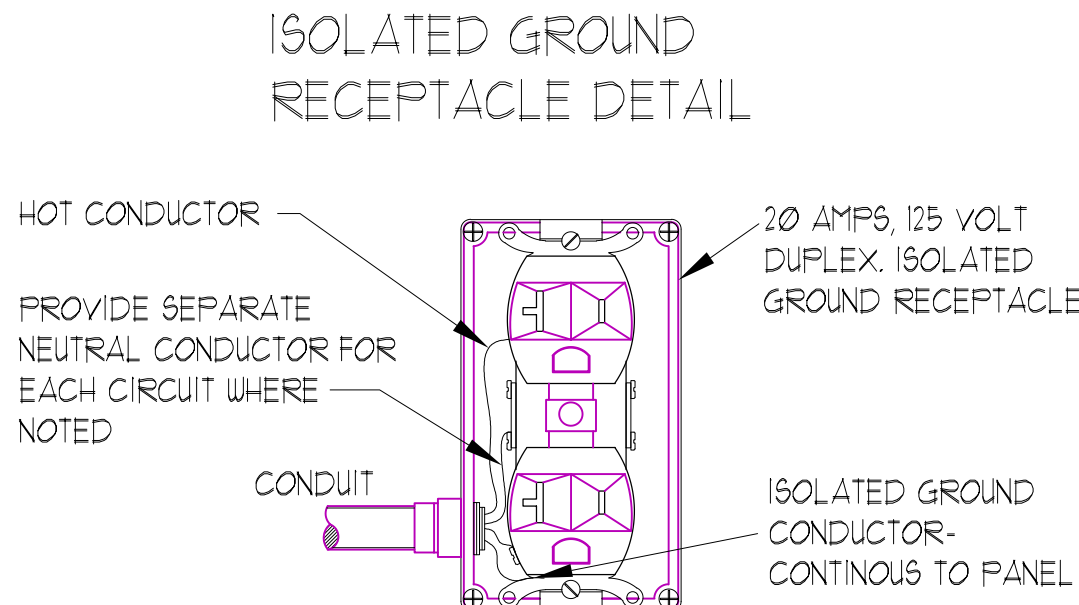
Contractor shall install new battery operated smoke detector (min. 10 yrs sealed battery) at each bedroom and outside bedroom as shown

ELECTRICAL LEGEND

SCALE: NT5

ELECTRICAL LEGEND			
	SINGLE RECEPTACLE OUTLET		INTERCOM SPEAKER
	DUPLEX RECEPTACLE OUTLET		STEREO CONTROL
	WEATHERPROOF DUPLEX OUTLET		TELEPHONE OUTLET
	WEATHERPROOF GFI DUPLEX OUTLET		CEILING EXHAUST FAN W/LIGHT
	RECESS LIGHT (HI-HAT)		SINGLE POLE SWITCH
	SPEAKER DROP (SEE PL. FOR LOCATION)		THREE-WAY SWITCH
	230 VOLT OUTLET		FOUR-WAY SWITCH
	GFI DUPLEX RECEPTACLE OUTLET		DIMMER SWITCH
	SPLIT-WIRED DUPLEX RECEPTACLE OUTLET		CEILING LIGHT FIXTURE
	DISCONNECT		WALL MOUNTED LAMP
	ELECTRICAL METER		WATERPROOF WALL LAMP
	MAIN DISCONNECT		DOOR BELL BUTTON
	FLOOR OUTLET		DOOR BELL CHIME
	COMBO CARBON MONOXIDE & SMOKE DETECTOR WITH BATTERY BACKUP		ELECTRICAL PANEL
			CEILING FAN (J BOX ONLY)
			SECURITY SPOT LAMPS

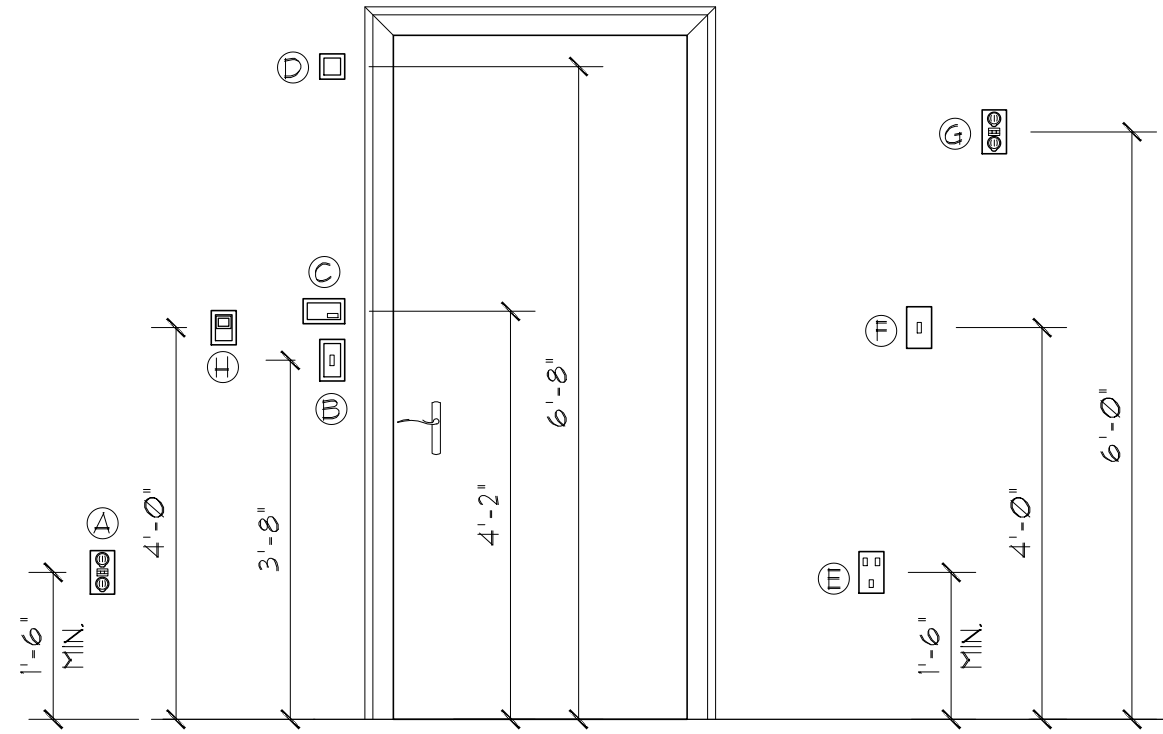
ELECTRICAL SCOPE AND DETAILS



ELECTRICAL SCOPE AND NOTE

- 1- INSTALL GFCI OUTLETS AT KITCHEN AND BATHROOMS
- 2- INSTALL RETROFIT SMOKE DETECTORS AT BEDROOMS AND OUTSIDE OF BEDROOMS - USE MIN. 10 YRS SEALED BATTERY TYPE SMOKE DETECTOR
- 3- REPLACE FIXTURES AS NEEDED
- 4- ELECTRICAL SERVICE IS EXISTING AND WILL REMAIN AS IS
- 5- ELECTRICAL CONTRACTOR SHALL VERIFY THAT 'OCP' ARE INSTALLED

TOTAL LOAD CALCULATION = UNCHANGED Exist. AMPS



DEVICES SCHEDULE

- (A) RECEPTACLE OUTLET (DUPLEX OR QUAD)
- (B) LIGHT SWITCH
- (C) THERMOSTAT (WHERE APPLICABLE)
- (D) EMERGENCY FLASHING STATION (STROBE LIGHT)
- (E) PHONE/DATA COMBINATION
- (F) WALL PHONE OUTLET
- (G) MICROWAVE OUTLET (WHERE APPLICABLE)
- (H) MANUAL PULL STATION (FIRE ALARM)

REVISIONS	BY

DANIEL F BRABLEC, ARCHITECT

9045 LaFONTANA BLVD.
BOCA RATON, FLA. 33434
(561) 479 - 2388 (561) 451 8589 fax.
AR 0012526

AS BUILT AND PROPOSED REPAIR FOR

124 NW 12 STREET
124 NW 12th STREET
POMPANO BEACH, FLORIDA 33060

DRAWN PDS, INC. CHECKED
DATE 3-3-2021
SCALE AS NOTED
PROJECT NO. 002-21
SHEET 1

DRC
PZ21-05000010
5/5/2021